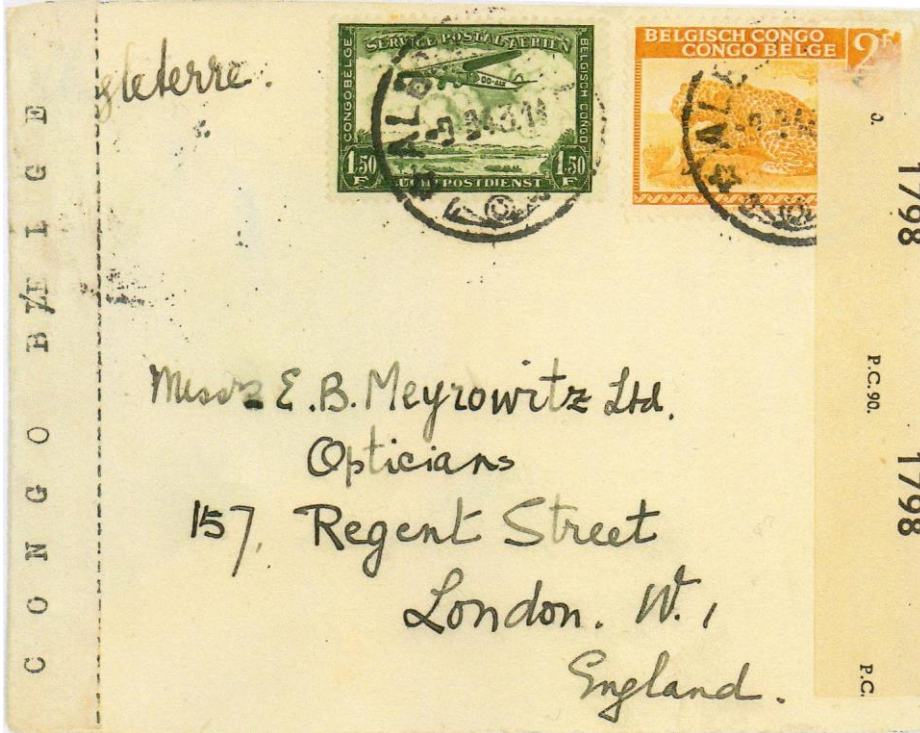


QUESTIONS – REPONSES
QUESTIONS – ANSWERS

Two Questions – from Alan Morvay (USA)

Question 1:



Question 1:

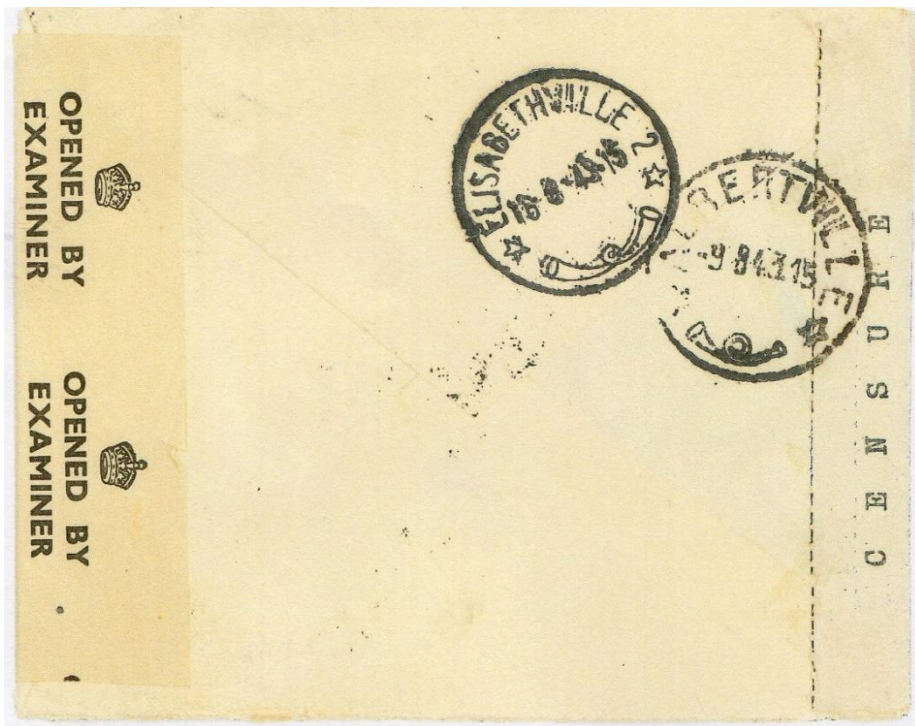
Do you have any information about the typed “Censure Congo Belge” censor tape shown on this cover ?

Réponse / Answer

By Thomas Lindekens

No information about this “emergency” censor tape never seen before. Probably unique.

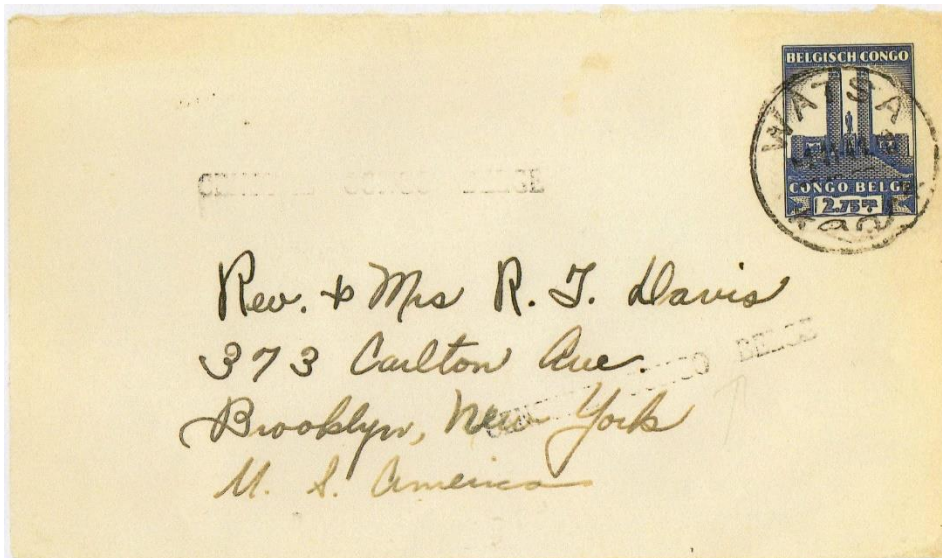
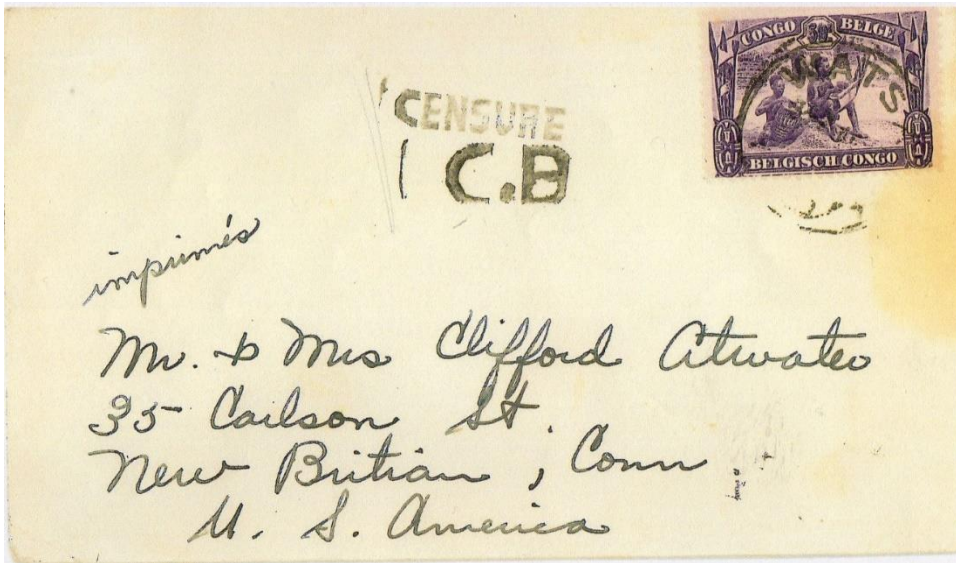
Or, we can suppose that this censor tape was applied in Albertville because stamps was cancelled in this town and the censor tape had the cancel of Albertville on it. But strange because Albertville had the “Aa” tape since March 1942.



(the Aa type is the usual censor tape type available in almost all censor offices).

Or, we can suppose that the letter was sent from another place of Albertville and cancelled in transit and so opened by an unapproved/unofficial censor office where no censor material was available.

Question 2:



Question 2:

Why does one Watsa cover have "CENSURE" cancel on the back while the other Watsa cover has a "CENSURE / CB" cancel on the front? Were these censor marks applied at the same time or separately by different censors?

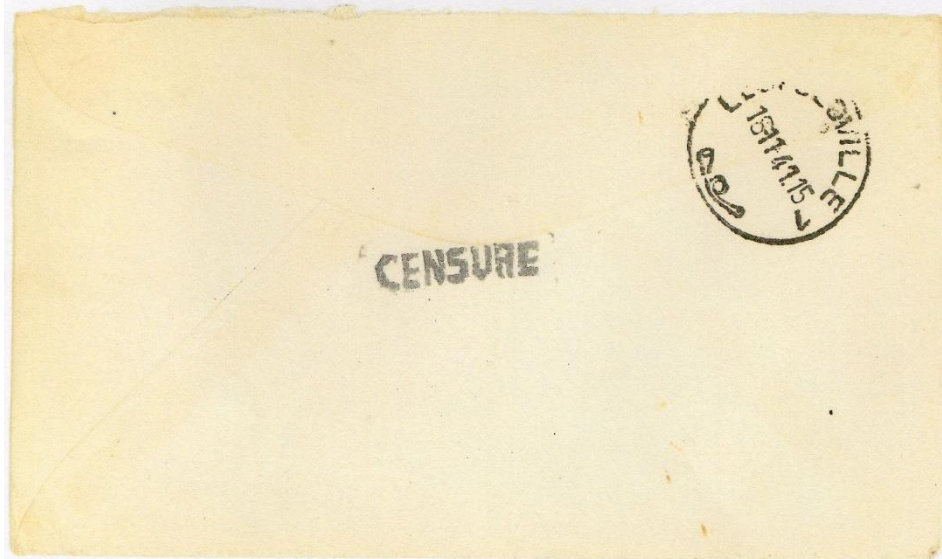
Réponse / Answer

By Thomas Lindekens

The "CENSURE / CB" cachet was applied in two part. See cover on the next page.

I have this same letter in my collection from the same sender and I saw a lot of cover from this sender.

The "CENSURE" and the "C.B." were applied, for me, by the same censor man, maybe he forgot "CB" mark: or to earn more time or he lost it.



A lot of suppositions / deductions but not a real explanation - sorry



Censure tape type Aa "CENSURE CONGO BELGE" applied at Watsa on July 29th, 1941 + mark "CENSURE" type KA and mark "C.B." type KB.

N'hésitez pas à nous envoyer vos questions ou pièces à commenter.

Don't hesitate to send us your questions or items to describe.